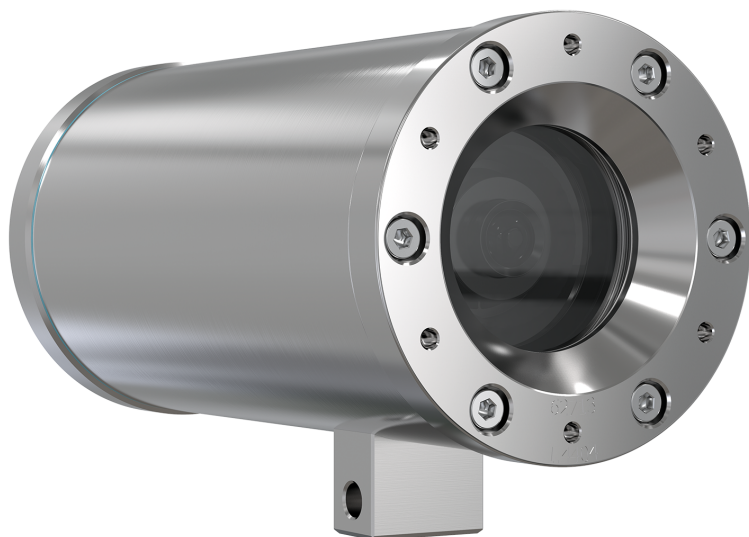


ExCam XF M3016 Explosion-Protected Network Camera

Small form-factor for process monitoring in hazardous environments

ExCam XF M3016 comes enclosed in a stainless steel explosion-protected housing and is certified (ATEX/IECEX/EAC Ex/IA) for use in potentially combustible zones. This lightweight and robust fixed box camera features Wide Dynamic Range (WDR), a wide field-of-view and great 3 MP image quality at up to 30 fps. It offers easy one-person installation and thanks to its compact design, it easily fits wherever you need it. It's powered by Power over Ethernet (PoE) and includes a pre-connected 5 m (16 ft) non-armored cable. Furthermore, Axis Zipstream with support for H.264 and H.265 significantly lowers bandwidth and storage requirements.

- > **3 MP at 30 fps, wide field-of-view, and WDR**
- > **Lightweight and compact**
- > **Powered by PoE with non-armored cable**
- > **ATEX, IECEX, EAC Ex, and IA**
- > **Zones 1, 2, 21, 22; Groups IIC, IIIC**



ExCam XF M3016 Explosion-Protected Network Camera

Camera		Sustainability	PVC free
Image sensor	Fixed focus, fixed iris 1/3" progressive scan RGB CMOS	Memory	512 MB RAM, 512 MB Flash
Lens	2.8 mm, F2.0 4:3 aspect ratio: Horizontal field of view: 69°, vertical field of view: 52° 16:9 aspect ratio: Horizontal field of view: 92°, vertical field of view: 52°	Power	Power over Ethernet (PoE) IEEE 802.3af/802.3at Type 1 Class 1, typical 2.9 W, max 3.8 W
Minimum illumination	0.4 lux at 50 IRE F2.0	Connectors	5 m (16 ft) shielded cable for network (Cat 6) with RJ45 10BASE-T/100BASE-TX PoE
Shutter speed	1/32500 s to 1/5 s	Storage	Pre-installed AXIS Surveillance microSDXC Card 64 GB Support for SD card encryption Support for recording to network-attached storage (NAS) For SD card and NAS recommendations see axis.com
Video		Operating conditions	-5 °C to 40 °C (23 °F to 104 °F) Maximum temperature (intermittent): 50 °C (122 °F) Humidity 10-100% RH (condensing)
Video compression	H.264 (MPEG-4 Part 10/AVC) Main and High Profiles H.265 (MPEG-H Part 2/HEVC) Main Profile Motion JPEG	Storage conditions	-40 °C to 65 °C (-40 °F to 149 °F) Humidity 5-95% RH (non-condensing)
Resolution	2016x1512 to 320x240 (4:3) or 2304x1296 to 640x360 (16:9)	Approvals	EMC EN 55032 Class B, EN 61000-6-2 Safety IS 13252 Environment IEC 60068-2-1, IEC 60068-2-2, IEC 60068-2-6, IEC 60068-2-14, IEC 60068-2-27, IEC 60068-2-78, IEC/EN 60529 IP68 Explosion EN/IEC/GOST/SANS 60079-0, EN/IEC/GOST/SANS 60079-1, EN/IEC/GOST/SANS 60079-31 Network NIST SP500-267
Frame rate	25/30 fps with power line frequency 50/60 Hz	Certifications	Model key: T08-VA.1.2.K1.BOR-N.N-005.N-P-090 ATEX: II 2 G Ex db IIC T6 Gb, II 2 D Ex tb IIIC T80 °C Db Certificate: TÜV 18 ATEX 8218X IECEX: Ex db IIC T6 Gb, Ex tb IIIC T80 °C Db Certificate: TUR 18.0023X EAC Ex: 1Ex db IIC T6 Gb, Ex tb IIIC T80 °C Db Series: T8, Model: T08-VA1.2. Certificate: TC RU C-DE.AB61.B.00381/19 IA: Ex db IIC T6 Gb, Ex tb IIIC T80 °C Db Certificate: MASC MS/18-3256X PESO: Ex db IIC T6 Gb Certificate: A/P/HQ/KA/104/5735
Video streaming	Multiple, individually configurable streams in H.264, H.265 and Motion JPEG Axis Zipstream technology in H.264 and H.265 Controllable frame rate and bandwidth VBR/MBR H.264/H.265	Dimensions	179 x 79 x 96 mm (7.0 x 3.1 x 3.8 in)
Multi-view streaming	2 individually cropped out view areas in full frame rate	Weight	2.7 kg (5.9 lb) including cable
Image settings	Compression, color, brightness, sharpness, contrast, local contrast, white balance, exposure control, text and image overlay, mirroring of images, privacy masks WDR: up to 100 dB depending on scene Rotation: 0°, 90°, 180°, 270° including Corridor Format	Included accessories	Installation guide, Windows® decoder 1-user license, AXIS Surveillance microSDXC Card 64 GB
Network		Optional accessories	Wall Mount ExCam XF M30, Pole Mount ExCam XF, EXTB-3 Junction Box ExCam, Non-armored cables ExCam, 10, 25, 95 m (33, 82, 312 ft), Armored cables ExCam 10, 25, 95 m (33, 82, 312 ft), Ex Connection Rail 4-port PoE PS 24, Ex Connection Rail 8-port PoE PS 24, Weathershield ExCam XF M30 For more accessories, see axis.com
Security	Password protection, IP address filtering, HTTPS ^a encryption, IEEE 802.1X (EAP-TLS) ^a network access control, digest authentication, user access log, centralized certificate management, brute force delay protection, signed firmware	Video management software	AXIS Companion, AXIS Camera Station, video management software from Axis Application Development Partners available at axis.com/vms
Supported protocols	IPv4, IPv6 USGv6, HTTP, HTTPS ^a , SSL/TLS ^a , QoS Layer 3 DiffServ, FTP, SFTP, CIFS/SMB, SMTP, Bonjour, UPnP™, SNMP v1/v2c/v3 (MIB-II), DNS, DynDNS, NTP, RTSP, RTP, TCP, UDP, IGMPv1/v2/v3, RTCP, ICMP, DHCP, ARP, SOCKS, SSH, LLDP, MQTT v3.1.1	Languages	English, German, French, Spanish, Italian, Russian, Simplified Chinese, Japanese, Korean, Portuguese, Traditional Chinese
System integration		Warranty	5-year warranty, see axis.com/warranty
Application Programming Interface	Open API for software integration, including VAPIX® and AXIS Camera Application Platform; specifications at axis.com One-click cloud connection ONVIF® Profile G, ONVIF® Profile S, and ONVIF® Profile T, specification at onvif.org	a. This product includes software developed by the OpenSSL Project for use in the OpenSSL Toolkit. (www.openssl.org), and cryptographic software written by Eric Young (eay@cryptsoft.com).	
Analytics	Included AXIS Video Motion Detection, active tampering alarm Support for AXIS Camera Application Platform enabling installation of third-party applications, see axis.com/acap	Environmental responsibility:	axis.com/environmental-responsibility
Event triggers	Analytics, virtual inputs through API, edge storage events		
Event actions	Record video: SD card and network share Upload of images or video clips: FTP, SFTP, HTTP, HTTPS, network share, and email Pre- and post-alarm video or image buffering for recording or upload Notification: email, HTTP, HTTPS, TCP, and SNMP trap Overlay text		
Data streaming	Event data		
Built-in installation aids	Pixel counter		
General			
Casing	IP68-rated, EN 1.4404 (ASTM 316L) stainless steel casing for maximum corrosion protection Casing manufactured and certified by Samcon Prozesstechnik GmbH, www.samcon.eu		